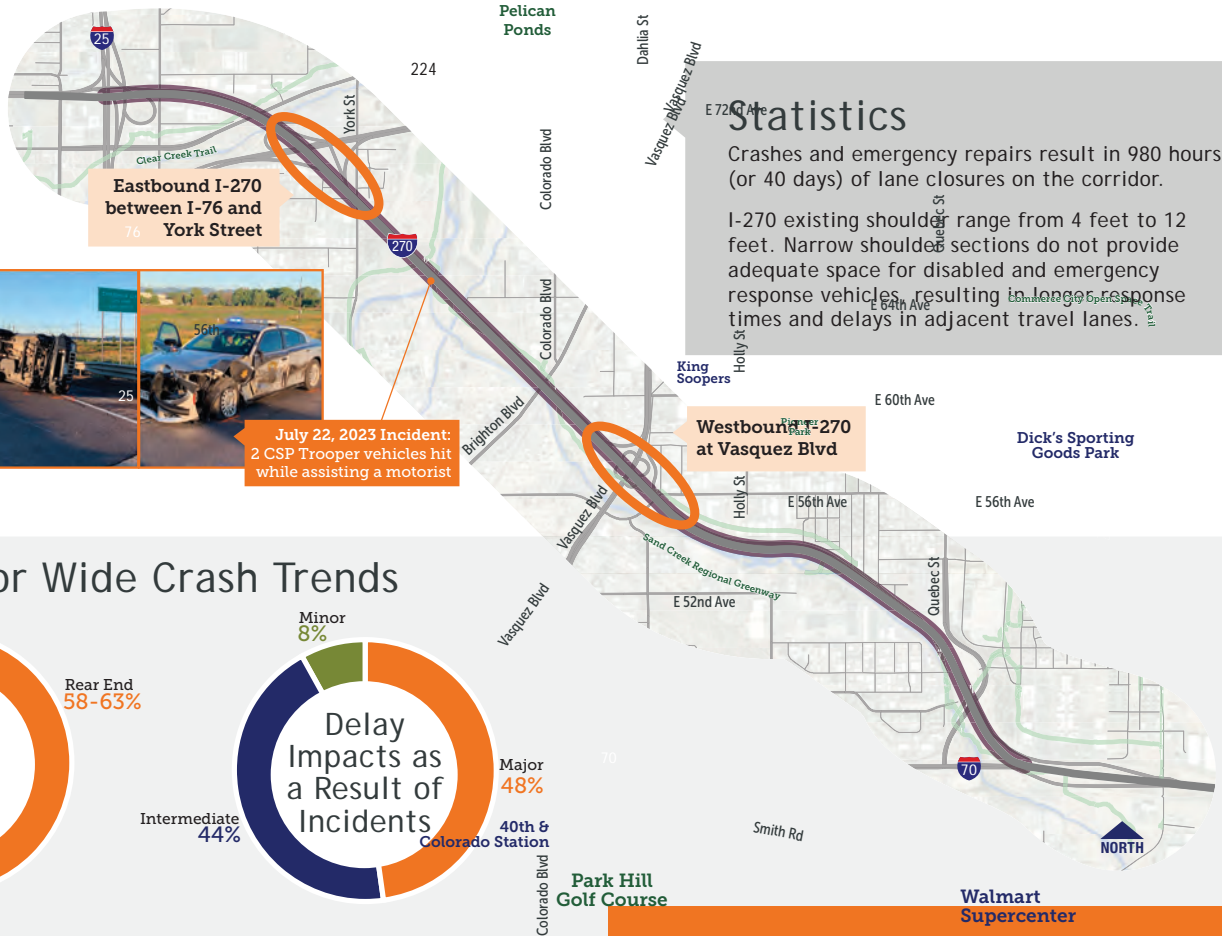


Corridor Safety



I-270 Corridor Improvements

High Crash Locations Along I-270

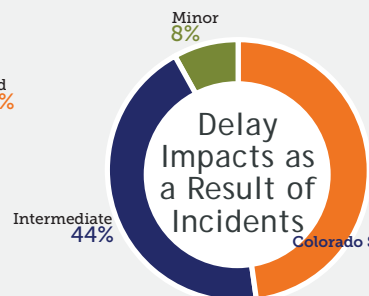
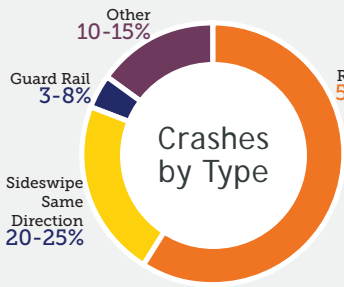


Statistics

Crashes and emergency repairs result in 980 hours (or 40 days) of lane closures on the corridor.

I-270 existing shoulder range from 4 feet to 12 feet. Narrow shoulder sections do not provide adequate space for disabled and emergency response vehicles, resulting in longer response times and delays in adjacent travel lanes.

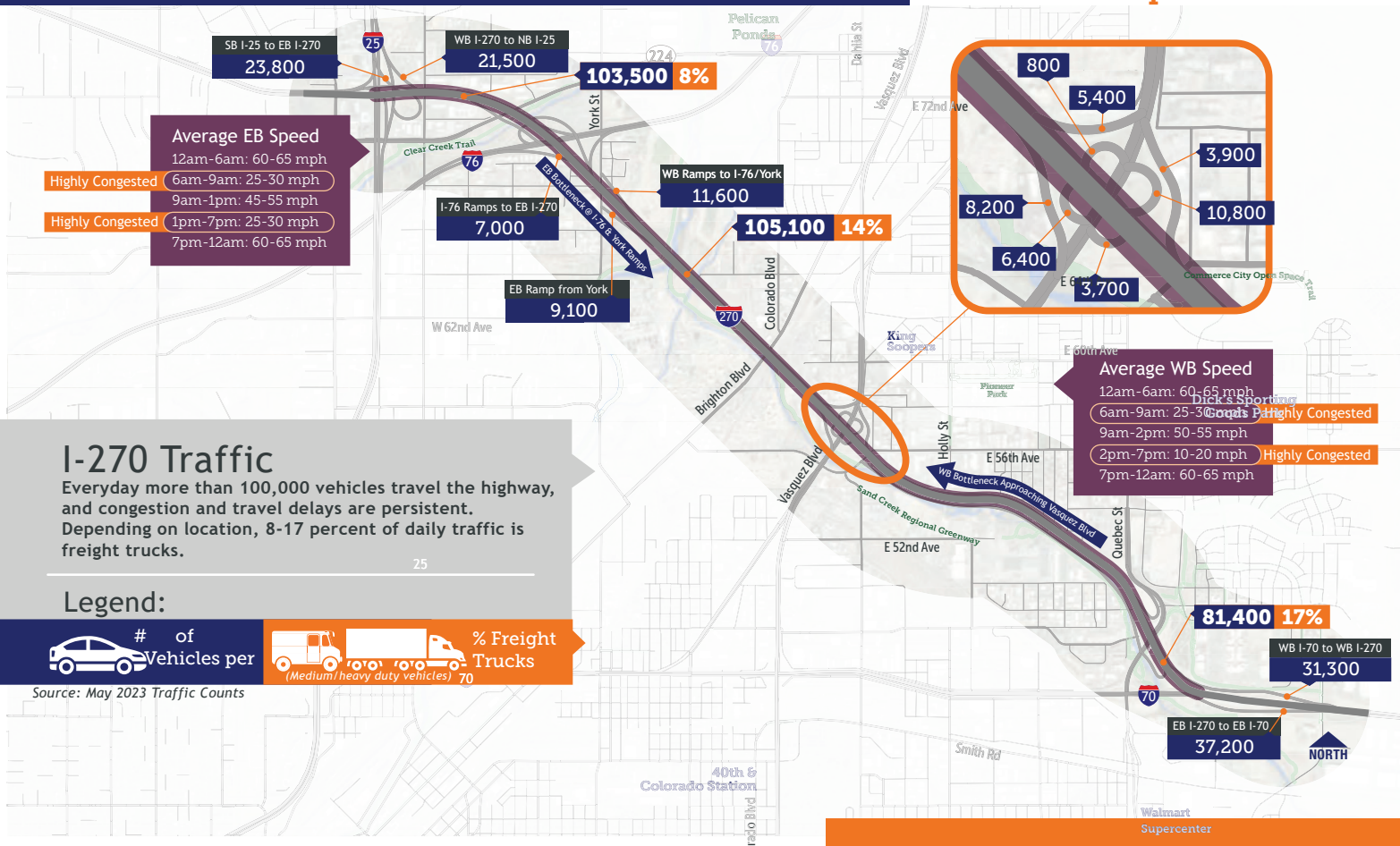
Corridor Wide Crash Trends



Existing Traffic (2023)



I-270 Corridor Improvements



Origin and Destination Study

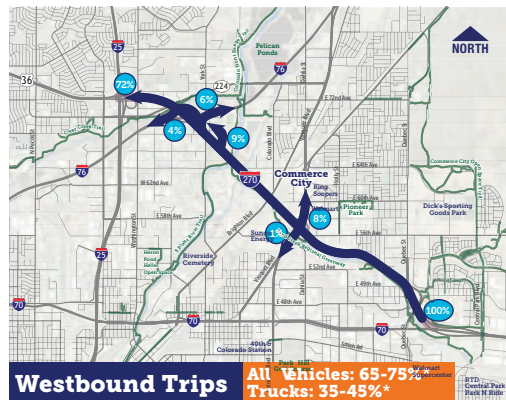


I-270 Corridor Improvements

Percent of vehicles that travel the length of I-270

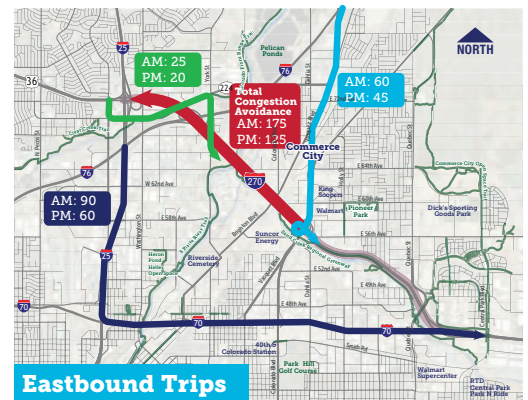
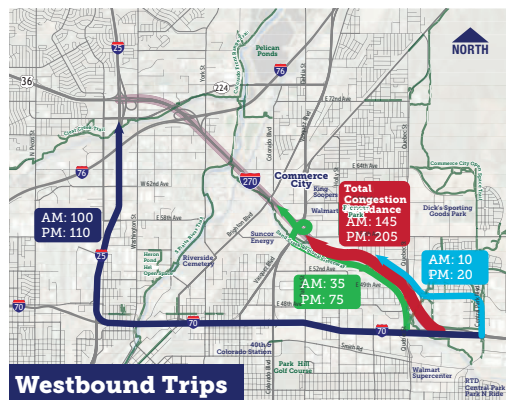
Through-trip traffic analysis was conducted from September to November 2021 to determine:

- Percent of traffic traveling on I-270 without stopping
- Percent of traffic traveling on I-270 diverting to other routes



Peak hour congestion avoidance on I-270

- Congestion on I-270 during peak hours makes some drivers seek alternate routes
- Use of alternate routes increases traffic on local neighborhood streets and on other highways, increasing the total distance vehicles travel
- 5-6% of all westbound vehicles and 4-5% of all eastbound vehicles use alternate routes during the peak hour



Critical Bridges



I-270 Corridor Improvements

Need

These bridges are reaching the end of their useful life. They are in need of replacement and are critical to improving safety and travel time reliability.

In the last 10 years this section of I-270 experienced:

65 emergency maintenance repairs

57% have occurred since 2020

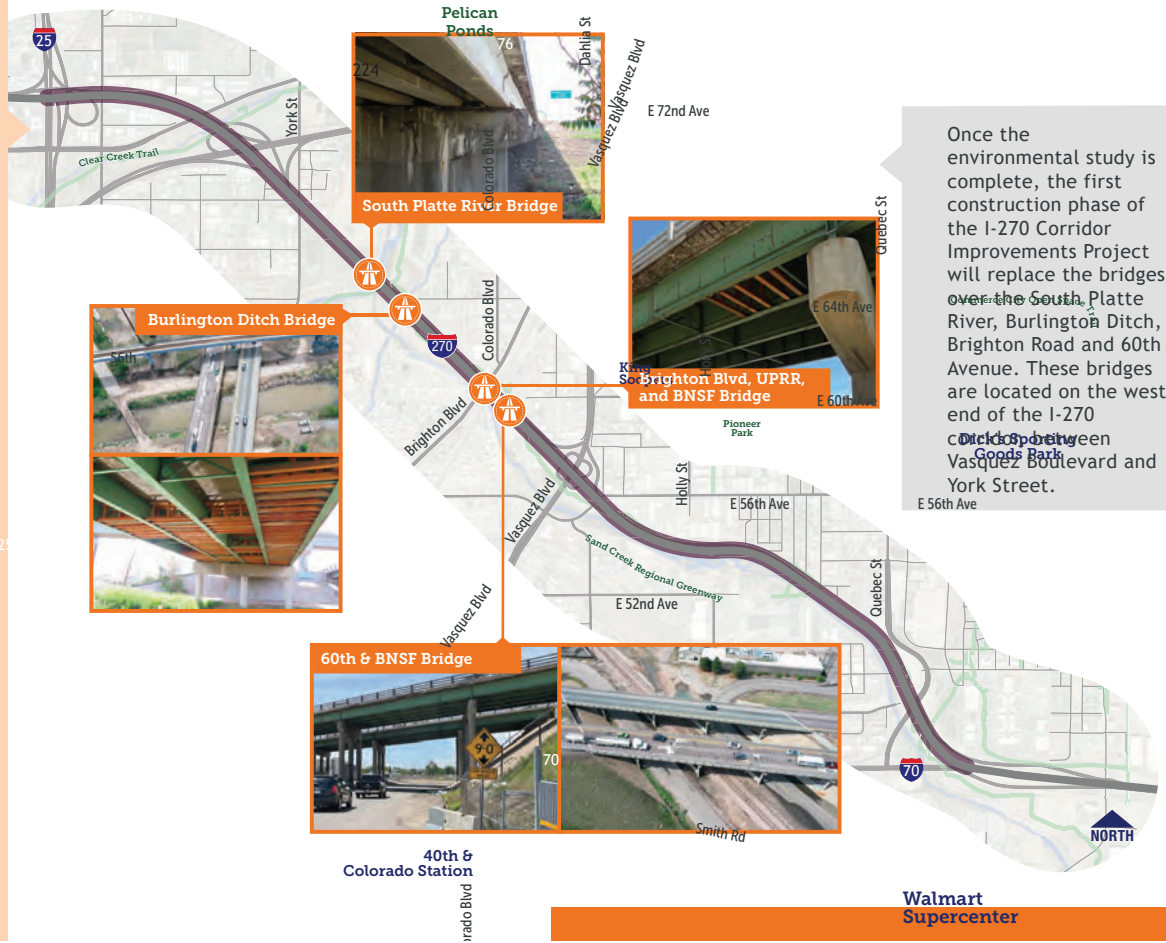
10 emergency repairs per year from 2020-present

160 planned maintenance repairs

44% have occurred since 2020

20 planned maintenance repairs per year from 2020-present

Since 2020, CDOT maintenance crews have spent \$150,000 and 300 hours of traffic control to maintain these bridges, per year.



Once the environmental study is complete, the first construction phase of the I-270 Corridor Improvements Project will replace the bridges over the South Platte River, Burlington Ditch, Brighton Road and 60th Avenue. These bridges are located on the west end of the I-270 corridor between Vasquez Boulevard and York Street.